



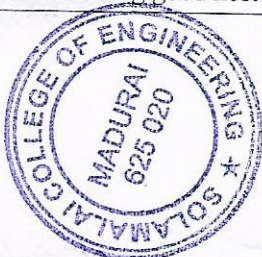
STUDENT FEEDBACK FORM ON GENERAL ASPECTS – ANALYSIS

Academic Year : 2019-2020

DATE : 02.07.2020

Rating	1	2	3	4	5	6	7	8	9	10	11	12	13	14	15	16	17	18	19	20	21	22	23	24	25
1	0	0	0	0	0	0	0	0	0	0	0	6	0	0	0	0	0	0	0	0	0	0	0	0	25
2	0	0	0	0	0	0	0	0	0	0	15	29	0	0	0	40	0	0	0	0	0	0	0	0	0
3	0	0	8	18	0	0	7	0	70	25	44	70	72	0	49	7	44	129	0	78	0	0	7	0	70
4	57	72	141	85	49	70	141	200	177	46	34	35	75	138	155	146	171	119	157	110	49	70	141	200	177
5	202	187	110	156	210	189	111	59	12	188	166	119	112	121	55	66	44	11	102	71	210	189	111	59	12
Total	259	259	259	259	259	259	259	259	259	259	259	259	259	259	259	259	259	259	259	259	259	259	259	259	259
ercentage(%)	94	86	87	92	86	92	90	84	86	98	84	88	74	82	76	74	86	74	78	78	82	84	75	75	78

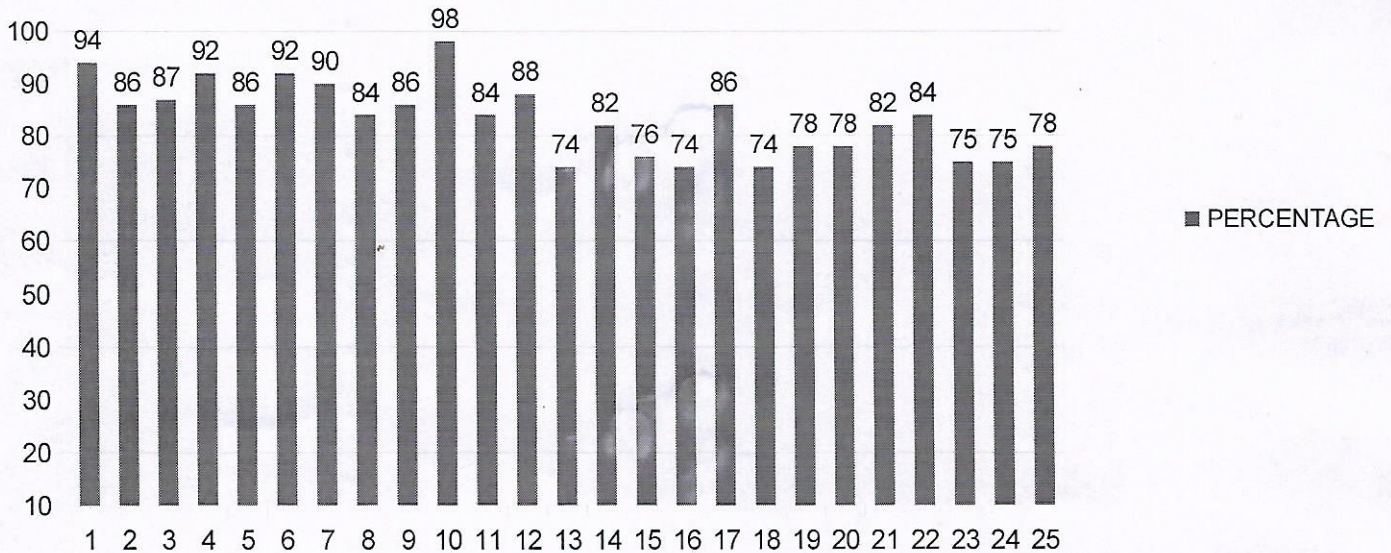
S.No.	Parameters	%
A.	Academics	
1	Teachers take classes regularly, cover the syllabus with clear explanations on all topics	94
2	Teachers clarify students' queries inside and outside the classes.	86
3	Teachers mentor students on regular basis and motivate them to focus on studies, co and extra-curricular activities.	97
4	Teachers organize guest lecturers/ seminars/ workshops/ internships/ field visits/ projects at Industries on regular basis.	92
5	Internal tests and end-semester examinations are periodically conducted towards students' continuous evaluation.	86
6	Students' results and attendance records are transparent and are displayed in notice boards	92
7	Students get additional skills towards employability through value added programs	90
8	Teachers practice Outcome Based Education and enable Course and Program outcomes towards students' knowledge, skills and behavior.	84
B	Administrative Support	
9	The Laboratory staff are polite & Helpful.	86
10	The Office staff are polite to you.	98
11	The administration work is efficient & on time.	84
12	How is Discipline on campus.	88
C	General Infrastructure	
13	Classrooms and Labs are clean and neat and enable quality learning,	74
14	Laboratory experiments enable effective learning and understanding of concepts and experiments.	82
15	Equipment and Computers are adequate and meet students' requirements.	76
16	Library ambience is good for informal and self-learning.	74
17	High speed Internet facilities are available in the Campus.	86
18	Canteen & Dinning space are adequate.	74
19	Quality, Clean drinking water is available.	78
20	Toilets/Washrooms are hygienic and well maintained.	78
21	The buildings and Class Rooms are accessible to differently abled persons.	82
D	General Facilities	
22	Institute is having good hostel and mess facilities.	84



Principal
 Solamalai College of Engineering
 1 / 8 Madurai-625 020. Tamilnadu

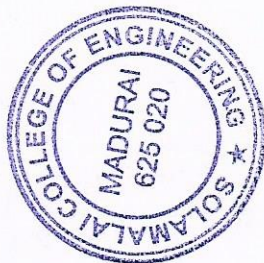


23	Institute is having good Gym and Yoga Centers.	75
24	Institute is having good transport facilities and is also accessible through public transport.	75
25	Campus is green, plastic-free and eco-friendly.	78



STUDENT FEEDBACK FORM ON GENERAL ASPECTS – ANALYSIS GRAPH

An average of 70% feedback received from the students are above of 70% for syllabus curriculum and general aspects for various programs designed by Anna university for the affiliated Colleges. The feedback received less than 70 % are considered and action taken are carried out.



[Signature]
Principal
Solamalai College of Engineering
Madurai-625 020, Tamilnadu.



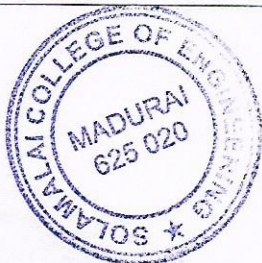
ALUMNI FEEDBACK FORM -ANALYSIS

Academic Year : 2019-2020

DATE : 02.07.2020

Rating	1	2	3	4	5	6	7	8	9	10	11	12	13	14	15	16	17	18	19	20
1	0	0	0	0	0	0	0	0	0	0	0	0	0	0	0	0	0	0	0	0
2	0	0	0	0	0	0	0	0	0	0	0	0	0	0	0	0	0	0	0	0
3	0	0	0	0	0	0	0	0	0	0	6	0	16	0	0	16	6	38	6	0
4	38	54	44	22	0	27	30	32	16	33	16	38	22	54	26	34	16	16	38	16
5	32	16	26	48	70	43	40	38	54	37	48	32	32	16	44	20	48	16	26	54
Total	70	70	70	70	70	70	70	70	70	70	70	70	70	70	70	70	70	70	70	70
Percentage(%)	82	78	88	92	84	92	86	94	86	92	84	86	82	88	88	84	82	72	90	82

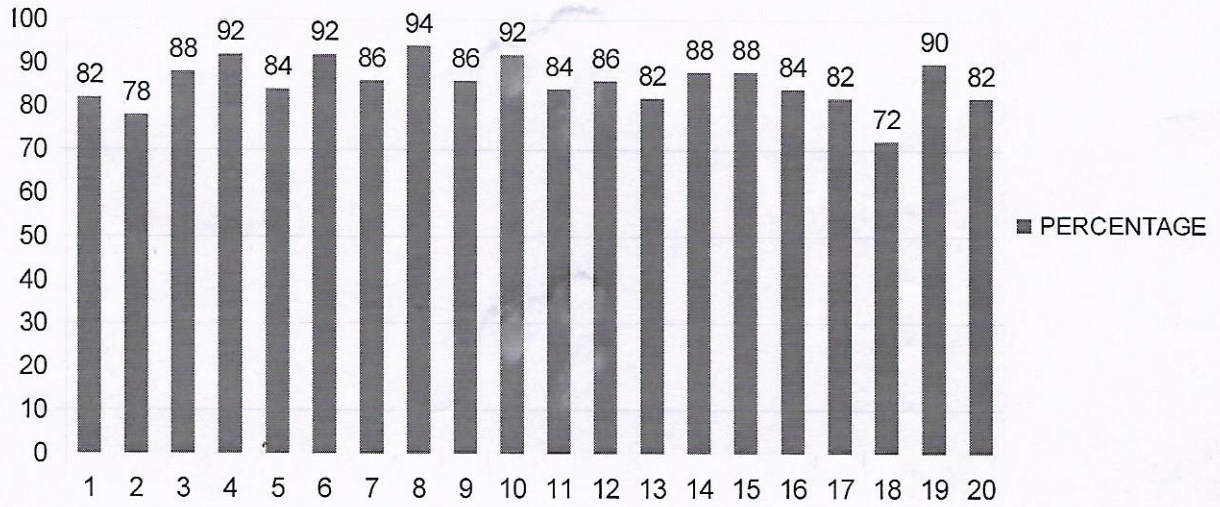
S.No.	Parameters	%
A.	Academics	
1	Ability acquired to apply technical knowledge in identifying and analyzing engineering problems	82
2	Ability acquired to integrate knowledge in providing solution for problems with multidisciplinary	78
3	Ability acquired to continue learning new technologies, processes and domains	88
4	Understand professional and ethical responsibilities as a engineer.	92
5	Be aware of the need for, and improved my ability to engage in life - long learning	84
6	Be aware of contemporary issues.	92
7	Understand and appreciate the impact of engineering in the social and global contexts	86
8	Seminars, workshop and add-on programs.	94
9	Special training classes to bridge the industry – academic gap	86
10	Were you benefited by the mentoring system in the department?	92
B	General Aspects	
11	Teachers and their mentorships helped in good academic performance and in excelling in co and extra- curricular activities.	84
12	Teachers have provided additional certification programs and opportunities to learn new skills for employability and life-long learning.	86
13	Academics, co and extra-curricular facilities and ambience shaped the character in terms of values, ethics, self-learning and creative attitudes.	82
14	Institute provided career development, personality development, communication skills development, employability skills development programs and enabled good placements and higher studies avenues.	88
15	Class Rooms and Laboratory facilities are good with ICT Tools, LCD Projectors, SmartBoards, Wireless Internet etc.	88
16	Library facilities are good with enormous number of books, eBooks, eJournals etc., for self-learning and research.	84
17	The opportunities to participate in NSS/NCC/ Redcross/YRC and in other Outreach activities inculcated social responsibilities.	82
18	Sports, Games and Gym facilities helped in maintaining good health and in participating in inter-institutional programs.	72
19	Canteen, Mess, Dinning space and Hostel Facilities are adequate and good.	90
20	Campus is green, plastic-free and eco-friendly; Neat and clean always; Well maintained.	82



Principal
 Solamalai College of Engineering
 Madurai-625 020, Tamilnadu.



ALUMNI FEEDBACK FORM -ANALYSIS GRAPH



An average of 70% feedback received from the Alumni are above of 70% for academics and General aspects for various programs designed by Anna university for the affiliated Colleges. The feedback received less than 70 % are considered and action taken are carried out.



Umu
Principal
Solamalai College of Engineering
Madurai-625 020, Tamilnadu.



TEACHERS FEEDBACK ON CURRICULAM AND AMBIENCE OF THE INSTITUTION -ANALYSIS

Academic Year : 2019-2020

DATE : 02.07.2020

Rating	1	2	3	4	5	6	7	8	9	10	11	12	13	14	15
1	0	0	0	0	0	0	0	0	0	0	0	0	0	0	0
2	0	0	0	0	0	0	0	0	0	0	0	0	0	0	0
3	0	7	0	12	0	4	12	21	0	0	25	0	24	0	0
4	54	61	54	30	16	35	44	26	27	49	17	54	32	69	25
5	32	18	32	44	70	47	30	39	59	37	44	32	30	17	61
Total	86	86	86	86	86	86	86	86	86	86	86	86	86	86	86
Percentage(%)	84	78	84	82	92	88	78	88	84	94	82	80	84	82	88

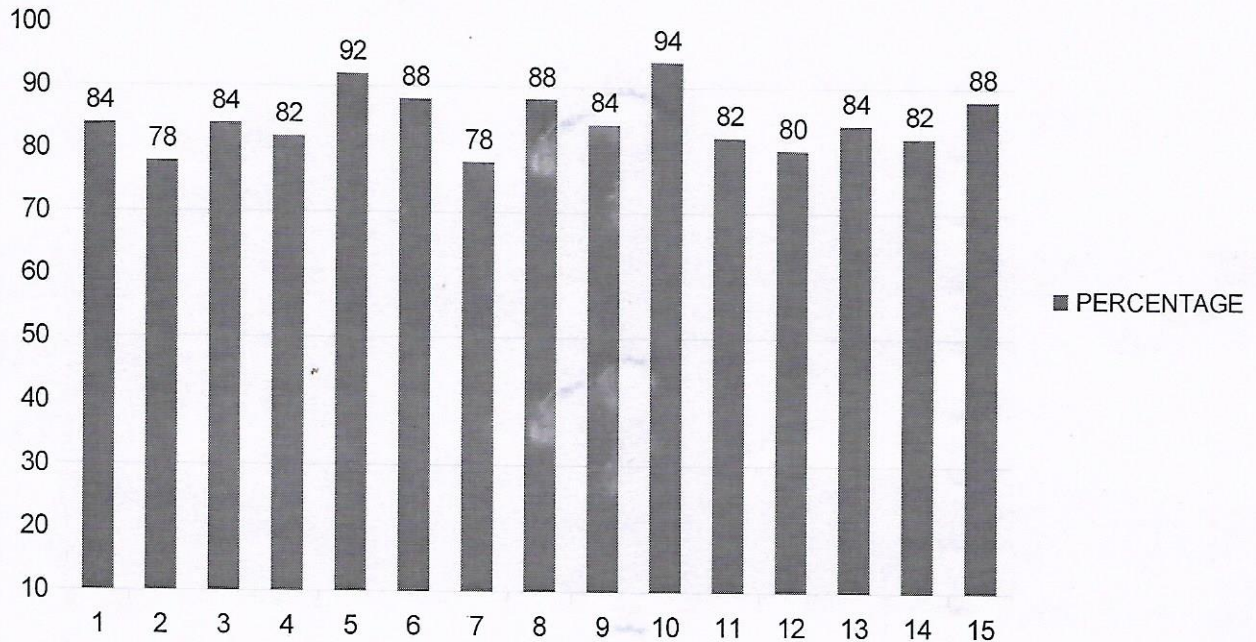
S.No	Parameters	%
A.	ACADEMICS	
1	Syllabus is sufficient to bridge the gap between industry standards/current global scenarios and academics.	84
2	The contents of the course are in conformity with the learning outcomes.	78
3	The units/sections in the syllabus are properly sequenced.	84
4	The recommended textbooks are adequate and Sufficient reference material and books available for the topics mentioned in the syllabus.	82
5	The practical's enabling to understand the theory and to develop experimental, design, problem solving and analysis skills of the students.	92
6	The timely coverage of syllabus is possible in the mentioned number of hours and the allocation of the credits to the course is appropriate.	88
7	The programme and curriculum is enriched as compared to similar programme offered by other universities.	78
B	AMBIENCE	
8	Class Rooms and Laboratory ambience are good for effective instructional delivery and practice.	88
9	Library facilities are good with enormous number of books, eBooks, eJournals etc., for self-learning and research.	84
10	The initiatives towards co-curricular activities helped in nurturing natural talents and achieving accolades.	94
11	Sports, Games and Gym facilities helped in practicing good health and in participating in inter-institutional competitions	82
12	Canteen, Mess, Dinning space, Hostel Facilities, transport facilities are adequate and good.	80
13	Campus environment promotes healthy interaction of students, teachers and other stake-holders.	84
14	Inclusive infrastructure meeting the needs of differently-abled stake-holders.	82
15	Campus is green, plastic-free and eco-friendly; Neat and clean always; Well maintained.	88



Mu
Principal
Solamalai College of Engineering
Madurai-625 020, Tamilnadu.



TEACHERS FEEDBACK ON CURRICULAM AND AMBIENCE OF THE INSTITUTION -ANALYSIS GRAPH



An average of 70% feedback received from the Teachers are above of 70% for academics and General aspects for various programs designed by Anna university for the affiliated Colleges. The feedback received less than 70 % are considered and action taken are carried out.



[Signature]
Principal
Solamalai College of Engineering
Madurai-625 020, Tamilnadu.



EMPLOYER'S FEEDBACK FORM-ANALYSIS

Academic Year : 2019-2020

DATE : 02.07.2020

Rating	1	2	3	4	5	6	7	8	9	10
1	0	0	0	0	0	0	0	0	0	0
2	0	0	0	0	0	0	0	0	0	0
3	0	0	0	1	0	0	0	0	0	0
4	0	2	3	1	2	3	2	3	1	2
5	5	3	2	3	3	2	3	2	4	3
Total	5	5	5	5	5	5	5	5	5	5
Percentage(%)	84	90	90	92	84	86	78	82	92	92

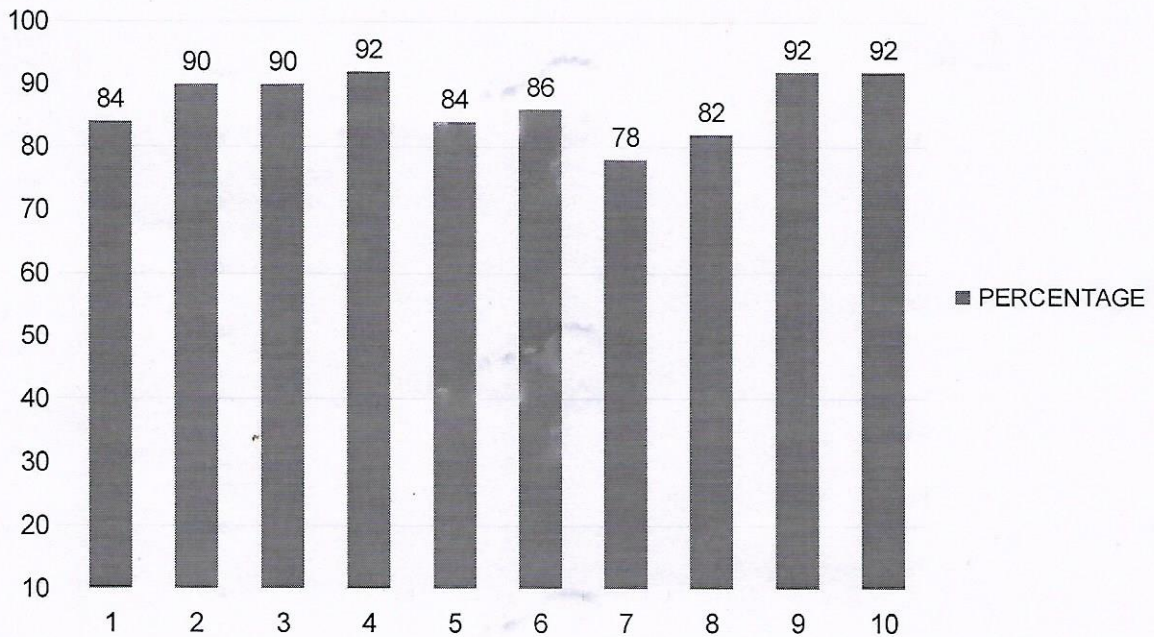
S.No	Parameters	%
1	Our Graduates employees have good technical skills and domain expertise.	84
2	The Graduates employees have good communication and interpersonal skills.	90
3	Our Graduates employees have good aptitude and problem solving skills.	90
4	Our Graduates employees collaborate with team members and undertake multidisciplinary tasks.	92
5	Our Graduates employees have good values and ethics system.	84
6	The Graduates employees have self-learning entrepreneurship skills/lifelong learning.	86
7	The graduates have adequate practical exposure for undertaking real time projects.	78
8	Our Graduate Employees have exposure to modern software tools.	82
9	The Graduate Employees exhibit additional and advanced knowledge acquired through self-learning certification programs and laboratory practices.	92
10	Our Graduate Employees have leadership abilities due to the participation in co & extra-curricular activities.	92



[Signature]
Principal
Solamalai College of Engineering
Madurai-625 020, Tamilnadu.



EMPLOYER'S FEEDBACK FORM-ANALYSIS GRAPH



An average of 70% feedback received from the Employers are above of 70% for academics and General aspects for various programs designed by Anna university for the affiliated Colleges. The feedback received less than 70 % are considered and action taken are carried out.



Usw
Principal
Solamalai College of Engineering
Madurai-625 020. Tamilnadu.